



## Electrical Discharge Machining Services

### Experience

Integrity EDM is an industry leader in all types of electrical discharge machining. We provide EDM services to some of the most prominent companies in the aerospace and power generation industries.

### Facility

Integrity EDM is located in a 20,000 square foot, state-of-the-art facility in Tipton, Indiana. Shipping parts to and from our location is fast and easy because we are located near multiple interstates, Indianapolis International Airport, FedEx, DHL and UPS facilities.

### Quality Assurance

We employ industry experts who follow a detailed quality assurance methodology that includes multiple checkpoints throughout the process to ensure that parts meet the most rigorous quality standards.

### Certifications & Approvals

- AS9100
- ISO9000
- Nadcap
- GE-approved vendor
- Rolls Royce-approved vendor
- Pratt-Whitney U.S.-approved vendor



610 MAPLE STREET . TIPTON IN 46072



PHONE (317) 333-7630

FAX (317) 333-7631

[www.IntegrityEDM.com](http://www.IntegrityEDM.com)



## Fast Hole EDM

### Fast hole EDM produces holes that:

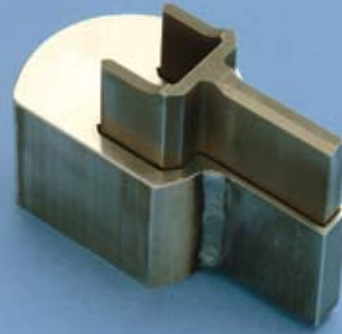
- Hold extremely accurate air flow tolerances
- Meet tight tolerances and precise specifications
- Have a large depth-to-diameter ratio

### Capabilities

- Hole Diameters: 0.009" to over 0.750"
- Maximum Work Piece Size: to 60" diameter

### Equipment

- Ten fast hole EDM machines



## Wire EDM

### Wire EDM produces:

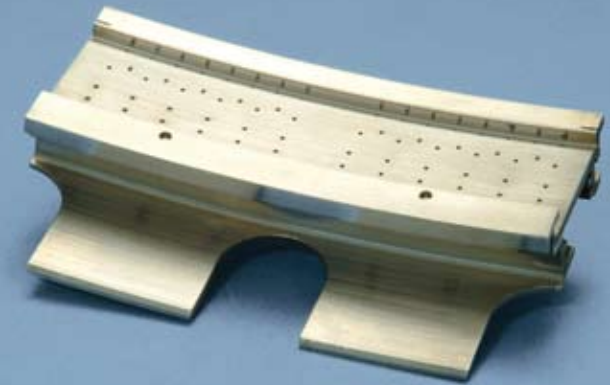
- Finished parts in virtually any shape from hard metal alloy
- Extremely accurate cuts with very little human intervention

### Capabilities

- Wire Diameters: 0.004" to 0.012"
- Maximum Taper Angle: 30 Degrees
- Maximum Cutting Height: 16"
- Maximum Work Piece Size: 47.25" x 30.0" x 16"
- Maximum Work Piece Weight: 1800 lbs
- Tolerances: Can be held to 0.0001"

### Equipment

- Four wire EDM machines



## Conventional EDM

### Conventional EDM (the original EDM process) produces:

- "Cut-outs" in hard metal alloys
- A wide variety of depressions and hollowed-out shapes in metal work pieces

### Capabilities

- Maximum Work Piece Size: 22.0" x 15.75" x 12.0"
- Maximum Work Piece Weight: 1100 lbs
- Tolerances: Can be held to 0.0005"

### Equipment

- Five conventional EDM machines (two with 4 axis capability)

## Machining

Integrity EDM performs machining services as a supplement to our EDM processes. We can perform milling and turning on all types of aerospace alloys, including nickel-based alloys and cobalt-based alloys.



PHONE (317) 333-7630

FAX (317) 333-7631

www.IntegrityEDM.com